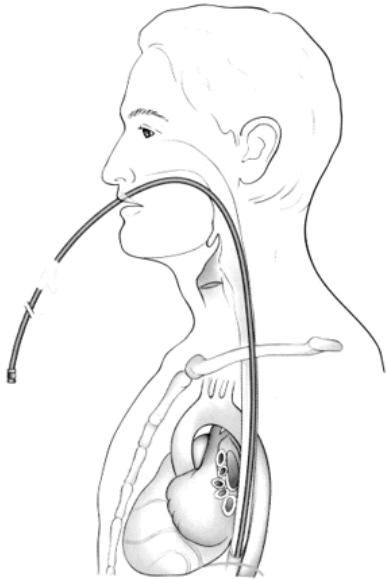


TRANSESOPHAGEAL ECHOCARDIOGRAM

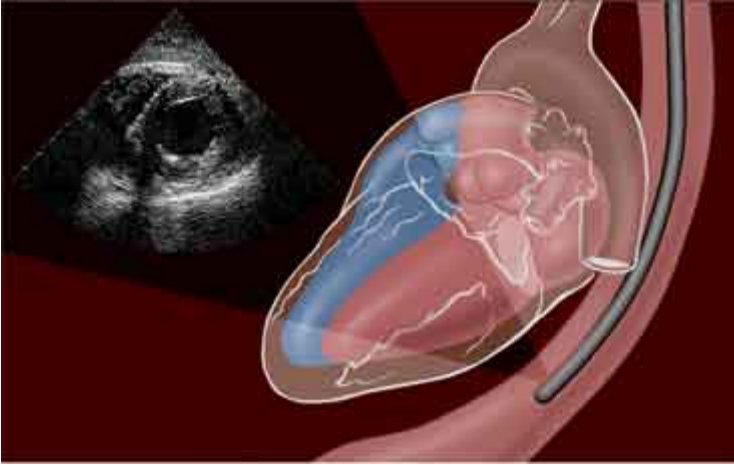


A transesophageal echocardiogram (TEE) is a test that produces images of the heart by the use of sound waves. This is done through a probe positioned in the esophagus behind the heart. This test gives the doctor a direct image of your heart without interference from the lungs, ribs, breastbone, or chest wall as in a standard echocardiogram.

Procedure

The test will be performed in the Center for Cardiac Care with a nurse, echo technologist and your cardiologist at the bedside. Your EKG, blood pressure, and oxygen levels will be monitored throughout the test. An IV will be started and you will be sedated.

- You may be asked to remove your dentures or partials prior to the procedure.
- You will be asked to lie on your left side.
- .A throat spray or gargle will be given to numb your throat. This spray/gargle may taste slightly bitter and make your tongue feel as if it were swollen. Sometimes, it can make your nose itch.
- .After you are relaxed and your throat and tongue are numb, the physician will insert the transducer into your mouth. You may be asked to swallow and place your chin on your chest to help ease the probe into place.
- .After positioning the transducer, images of the heart can be obtained. These images will be taped so that your doctor can review them as needed. You may hear a rhythmic sound from the machine as the test is performed.



Preparations

- Do not eat or drink anything 4-6 hours prior to the test.
- Take your medications as prescribed prior to the test with a small sip of water unless otherwise instructed by your physician.
- If this is done as an outpatient procedure, you should plan to have someone drive you home.
- When all numbness is gone (this may take up to two hours), you may begin to eat and drink again. You may experience throat soreness. Throat lozenges or a saltwater gargle should minimize any discomfort.